

Urushi-Laminated Stainless Steel Panel

(Toshihiro Terada) (Masaru Ikeda) (Katsuhiko  
Yamaguchi) (Yoshiaki Kawazoe) (Takuo Morimoto)

---

:  
( )

0.7 2.0 914

---

Synopsis :

By using Urushi-stainless steel foil which was composed of Urushi film developed by Kuzukawa Kogyo, Co. Ltd. and Kawasaki Steel's stainless steel foil, the authors have developed a new interior decoration material called the "Urushi-laminated stainless steel panel." The Urushi film and stainless steel foil were bonded with epoxy modified polyester adhesives, and then the Urushi-stainless steel foil and the stainless steel panel were bonded with the thermo-sensitive adhesive film of thermo plastic polyolefin resin. The authors have found by experiments that the thermo-sensitive adhesive films and press bonding conditions of respective adherents are satisfactory. The laminated Urushi

# 漆ラミネートステンレス鋼板パネル\*

川崎製鉄技報  
24 (1992) 3, 223-227

## Urushi-Laminated Stainless Steel Panel



### 要旨

葛川工業㈱で開発した漆フィルムと川崎製鉄㈱のステンレス箔からなる複合材料は新規な漆製品であり、新しい内装建材「漆ラミネートステンレス鋼板」を開発した。漆フィルムとステンレス箔の接着は、エポキシ変性ポリエステル接着剤を用い、漆-ステンレス箔

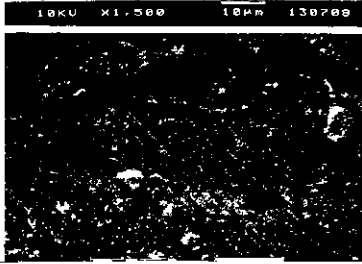


要があり、かつ漆の経時硬化能力を損なわずに加工すること。

(2) 耐熱性, 耐寒性, 耐水性, 耐湿性, 耐薬品性および耐衝撃性



Clear polyester film  
(60° specular gloss:  
79.1~80.6%)



Kneadmat polyester film  
(60° specular gloss:  
77.6~81.0%)

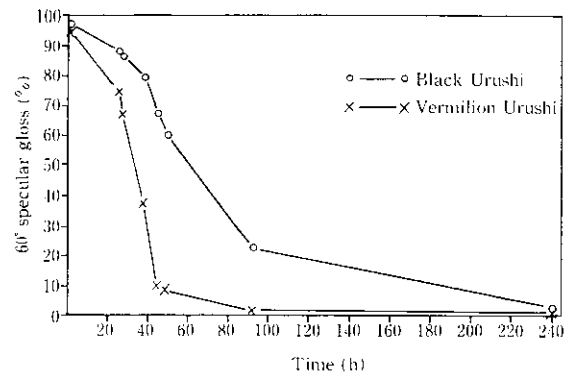
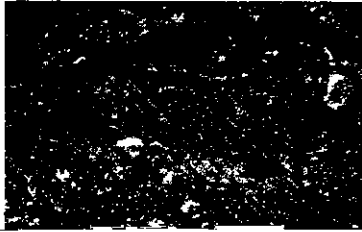


Fig. 7 Weather resistance of Urushi-laminated stainless steel panel

Kobe fashion mart  
building



Mural panel in the  
reception room

