

Planning and Construction of Large Diameter Submarine Pipeline between Singapore and Malaysia

(Seiichi Kato) (Tadashi Teramoto) (Toshiaki  
Sugawara) (Satoshi Maeda) (Masahiko Yoneda)

---

:  
2200mm 238mm

シンガポール水道配管工事  
——大口徑海底パイプラインの設計と施工\*

川崎製鉄技報  
20 (1988) 4, 299-307

Planning and Construction of Large Diameter Submarine  
Pipeline between Singapore and Malaysia

頁七





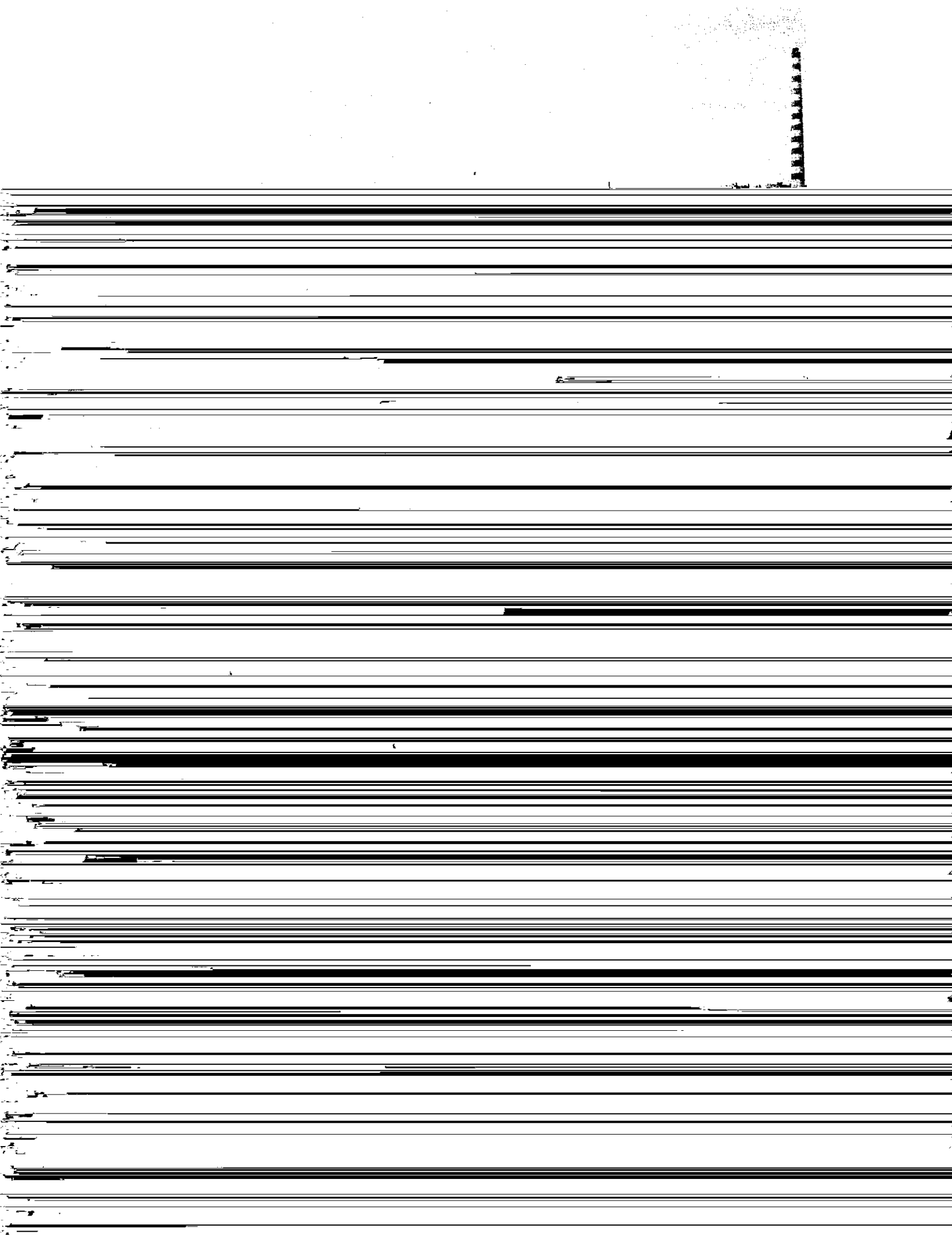


(6) 外面防食

溶接継手部の外面防食は熱収縮シートを使用した。検査は全

Steel pipe pile  
508  $\phi$   $\times$  11.1 t

(mm)



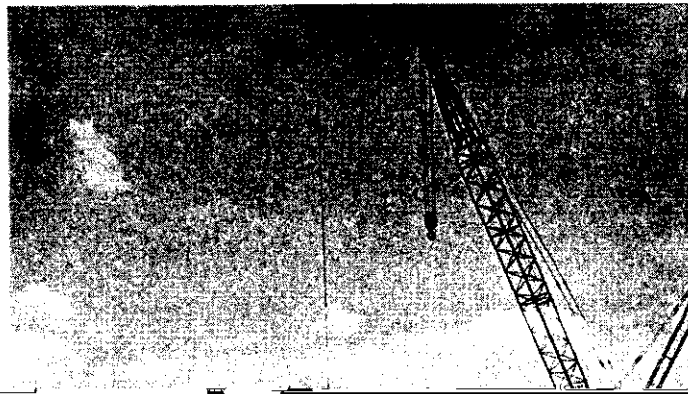
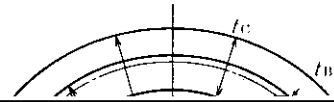




Table 5 Bending stiffness ( $K$ ) and moment of inertia ( $I$ )

	$K$ (kg·cm <sup>2</sup> )	$I$ (cm <sup>4</sup> )
1	0.50	1.50



[The page contains a large amount of illegible text, likely due to severe scanning artifacts or damage. The text is mostly obscured by thick black horizontal bars.]