

# Thickness Measuring System for Brake Shoe of Traveling Rolling Stock\*

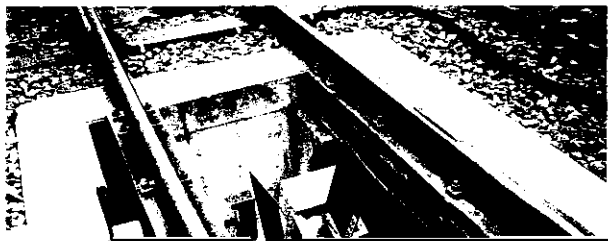
Jun Mori\*\*

Taisuke Uchida\*\*\*

## 1 Introduction

The system introduced here is an automatic thickness

stock, inspections of the functions of controlling devices, are performed.



**制輪子自動測定装置**

設置場所：山手電車区  
車両形式：205系  
入機時間：98/06/09 15:39  
車号：E1205-071  
測定部位

### 4.3 Improvement of Working Ratio

ber of years have been highly evaluated, and horizontal

With this system, the time required for measurements is greatly shortened, as measurements are performed while trains are traveling. As mentioned above, because

company is planned for the future. Similarly, these results have also received a high evaluation overseas, and a formal order for the same system was received